

How to Setup your backup service.

Table of Contents

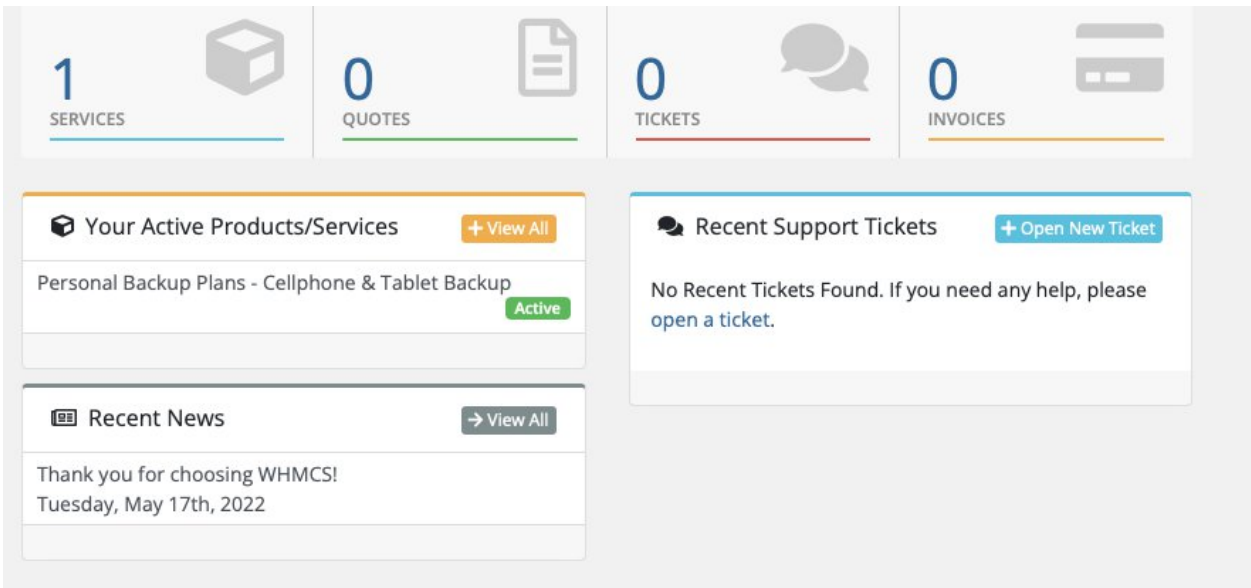
- How to Setup your backup service..... 1***
- Viewing your Services 2***
- Mobile Device.....5***
- How to Manage Desktop and Laptop Backups.....8***
- Adding a protection plan..... 15***

Viewing your Services

Login to your Real Cloud Backup Account.

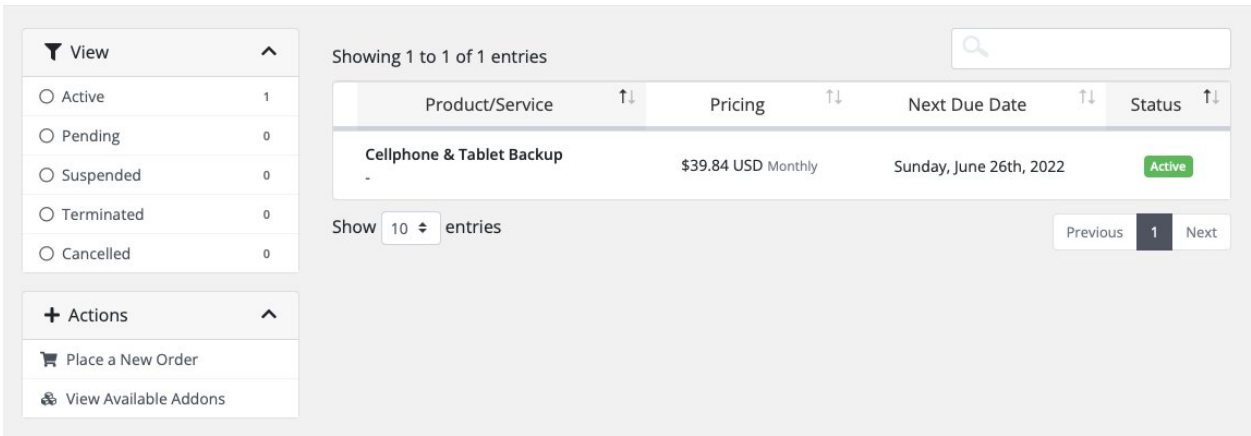
You can access your cloud console by going to the client area, and logging in.

Once logged in click on services to display your services.



The dashboard overview shows four main metrics: 1 SERVICE, 0 QUOTES, 0 TICKETS, and 0 INVOICES. Below these are three sections: 'Your Active Products/Services' with a '+ View All' button, showing 'Personal Backup Plans - Cellphone & Tablet Backup' with an 'Active' status; 'Recent Support Tickets' with a '+ Open New Ticket' button and a message 'No Recent Tickets Found. If you need any help, please open a ticket.'; and 'Recent News' with a 'View All' button, showing a message 'Thank you for choosing WHMCS! Tuesday, May 17th, 2022'.

This will display your active, and cancelled services that you have with Real Cloud Estate.



The detailed view shows a table with one entry. The table has columns for Product/Service, Pricing, Next Due Date, and Status. The entry is 'Cellphone & Tablet Backup' with a pricing of '\$39.84 USD Monthly' and a next due date of 'Sunday, June 26th, 2022'. The status is 'Active'. The table is filtered to show 1 of 1 entries. There are 'Previous' and 'Next' navigation buttons, with '1' selected. A search bar is visible at the top right.

View	Count
Active	1
Pending	0
Suspended	0
Terminated	0
Cancelled	0

Product/Service	Pricing	Next Due Date	Status
Cellphone & Tablet Backup	\$39.84 USD Monthly	Sunday, June 26th, 2022	Active

Click on your desired product, and it will take you to a new page displaying your product info.

General info

Account

[Go to Cloud Console](#)

Login

Email

Notifications

[Edit notifications](#)

Cyber Protection

Daily recap about active alerts

Management Portal

Quota overuse notifications
Scheduled usage reports

Subscription

Name

Cellphone & Tablet Backup

Status

Active

Registration date

26 May 2022

Next due date

26 Jun 2022

Billing cycle

Monthly

Recurring amount

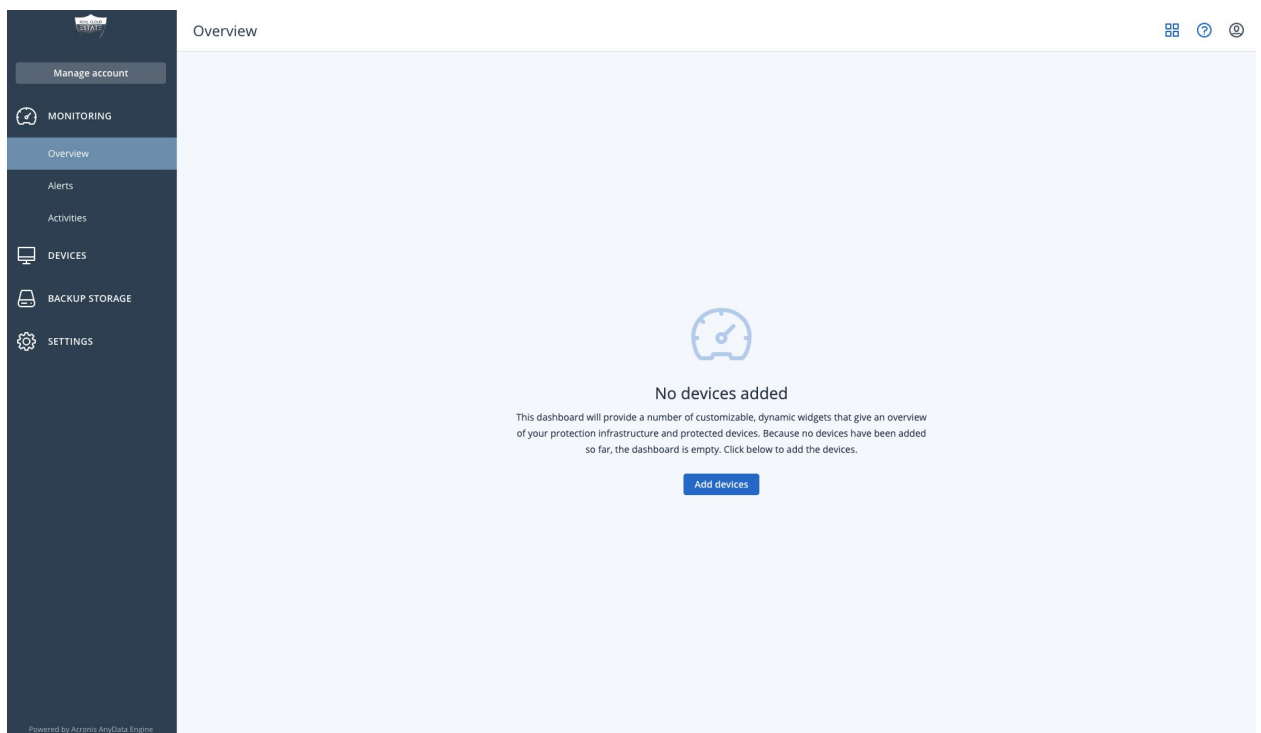
US\$39.84

Payment method

PayFast

Click on the “Go to Cloud Console” button to be taken to the cloud console where you can setup your backup jibs and download the agent.

You will need to enter your login username and password and enter your 2 factor verification code.



Click add devices, and download the agent for your device. You will only be able to see the agent that is for the product you have purchased.

Mobile Device

In this case we have bought the mobile device backup option.

MOBILE DEVICES



iOS



Android

REGISTRATION VIA CODE

Register a device by entering the code obtained during the agent installation.

REGISTER

REGISTRATION TOKEN

Use the token instead of your user name and password when configuring automated deployment of agents.

GENERATE

MANAGE ACTIVE TOKENS

App Store Preview

Open the Mac App Store to buy and download apps



Acronis Cyber Protect 4+

Mobile Backup for Business

Acronis, Inc.

Designed for iPad

★★★★★ 4.4 • 28 Ratings

Free

[View in Mac App Store ↗](#)

Download Acronis Cyber Protect on your mobile device, from the App store or the Play Store.

Once Downloaded open the app.

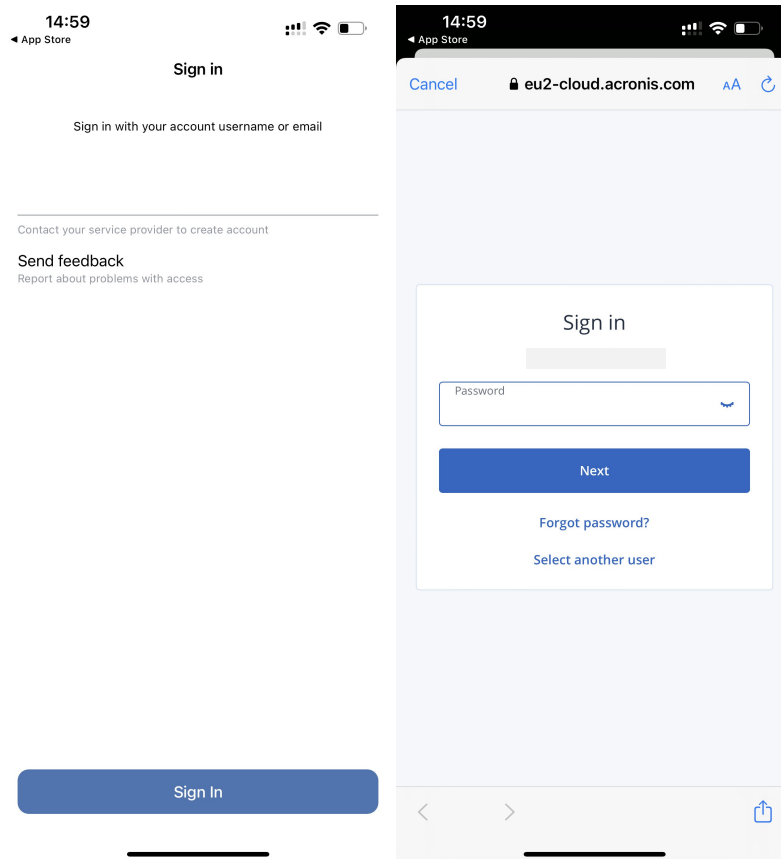


Welcome to Acronis Cyber Protect

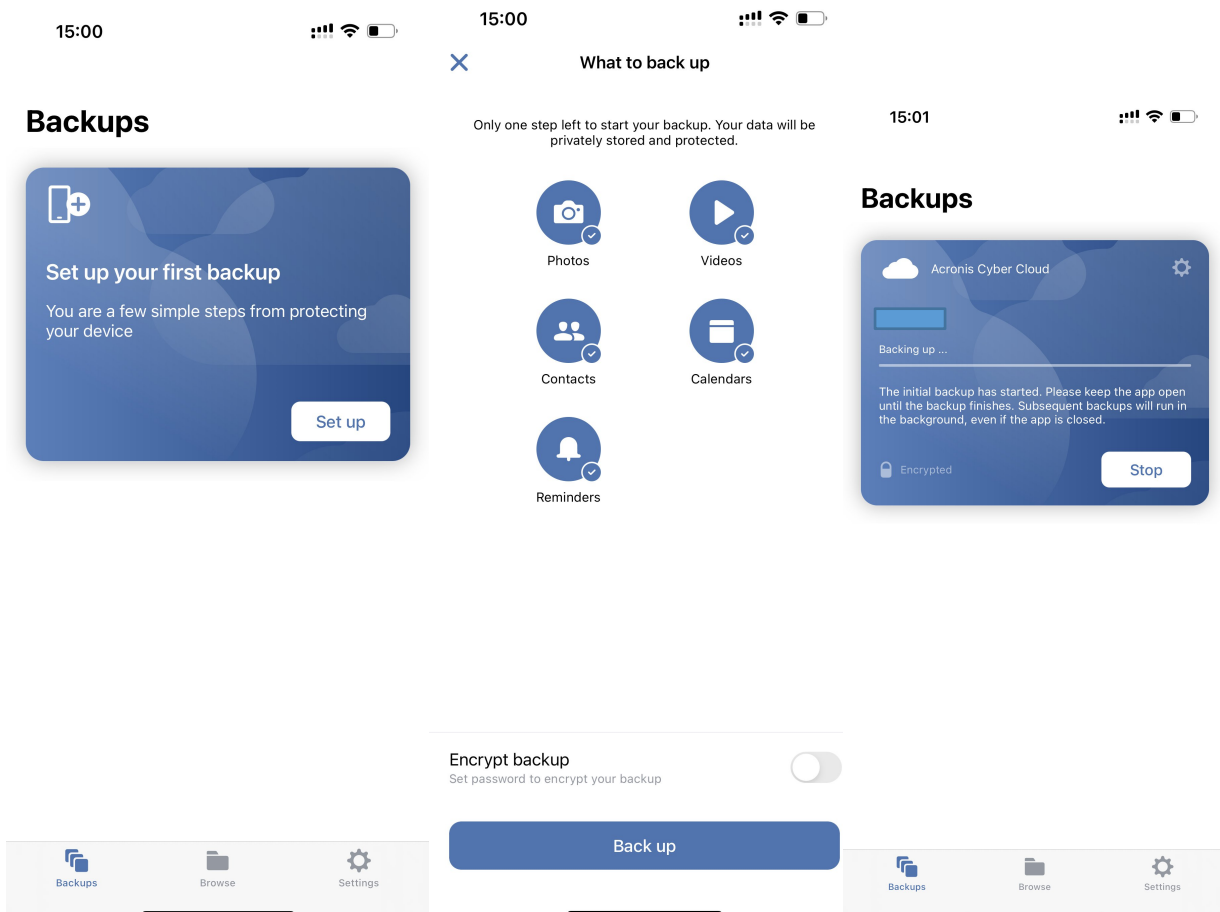
- Save what matters**
Automatically back up your photos, videos, calendars, and more
- Browse and Recover**
Retrieve any file from any of your devices
- With powerful protection**
Enable password protected AES-256 encryption for backup

Continue

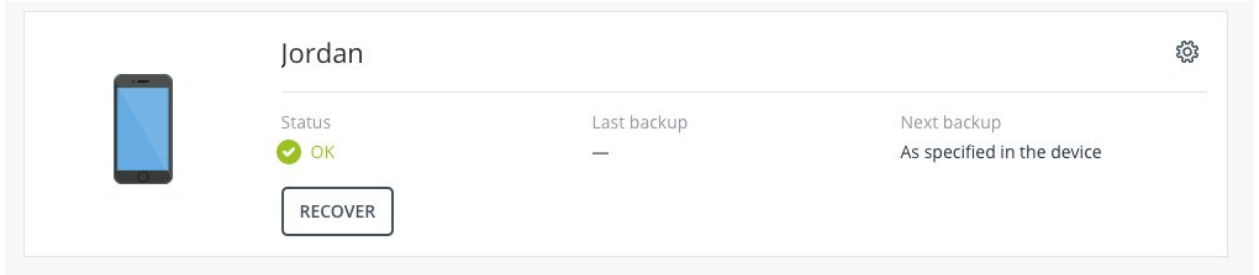
Sign in with your username and you will be redirected to the login page, where you will again need to enter your username and password, and enter your 2 factor authentication.



Click setup backup to begin creating your backup. Choose what you would like to backup, and select encrypt to secure your backups. You will need to enter an encryption password.



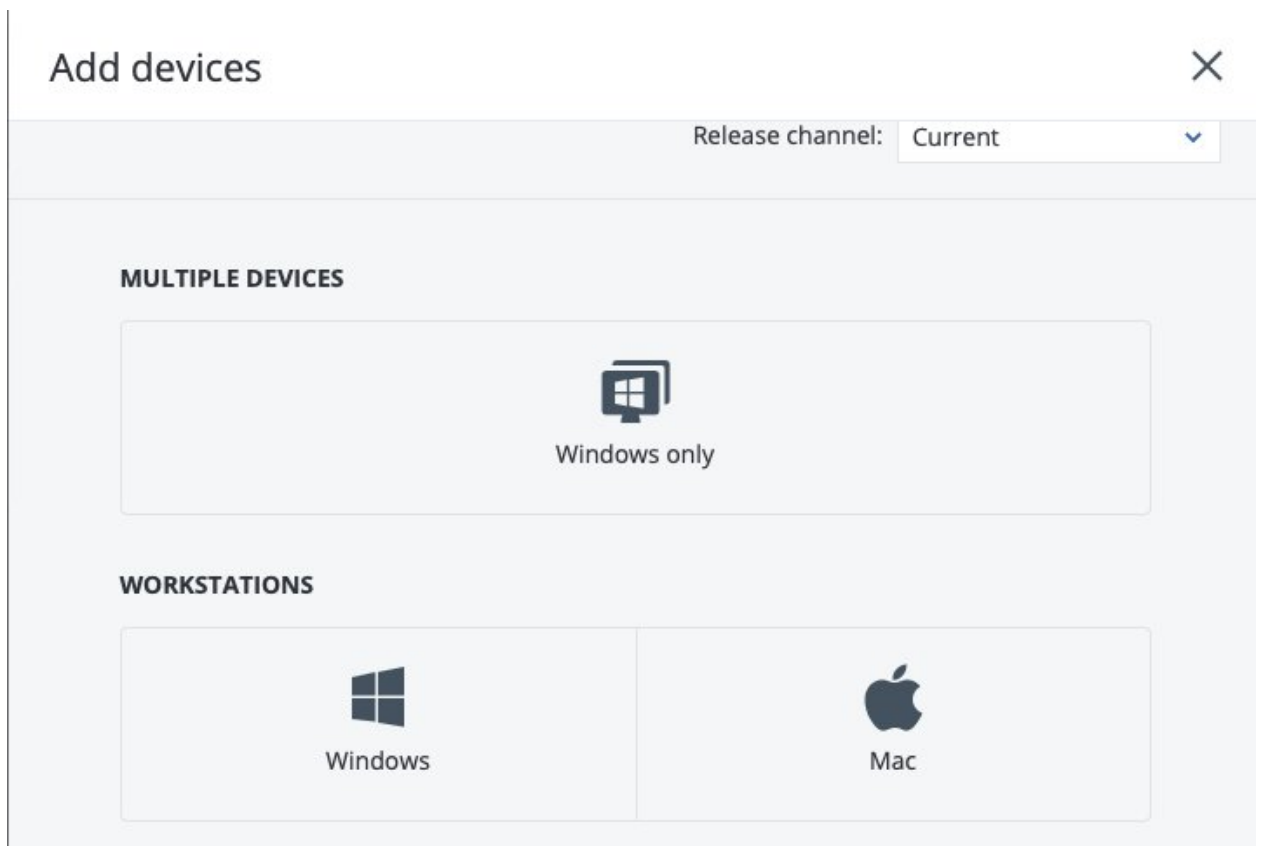
Once you have finished the setup of your backup it will begin to backup your device. Your device will be visible in the cloud console where you can manage the device, and backup plans if you wish.



How to Manage Desktop and Laptop Backups

Login to your Cloud console account, and click add device.

Choose you device type, Windows or Mac, if you need linux please contact us.



In our case we are downloading for a Mac agent, for windows it will be the same, download the installer follow the installation instructions.

Double click on the installer

 Real_Cloud_Estate_AgentForMac_web.dmg

Double click on install

Agent for Mac



Install



Uninstall

Click on install

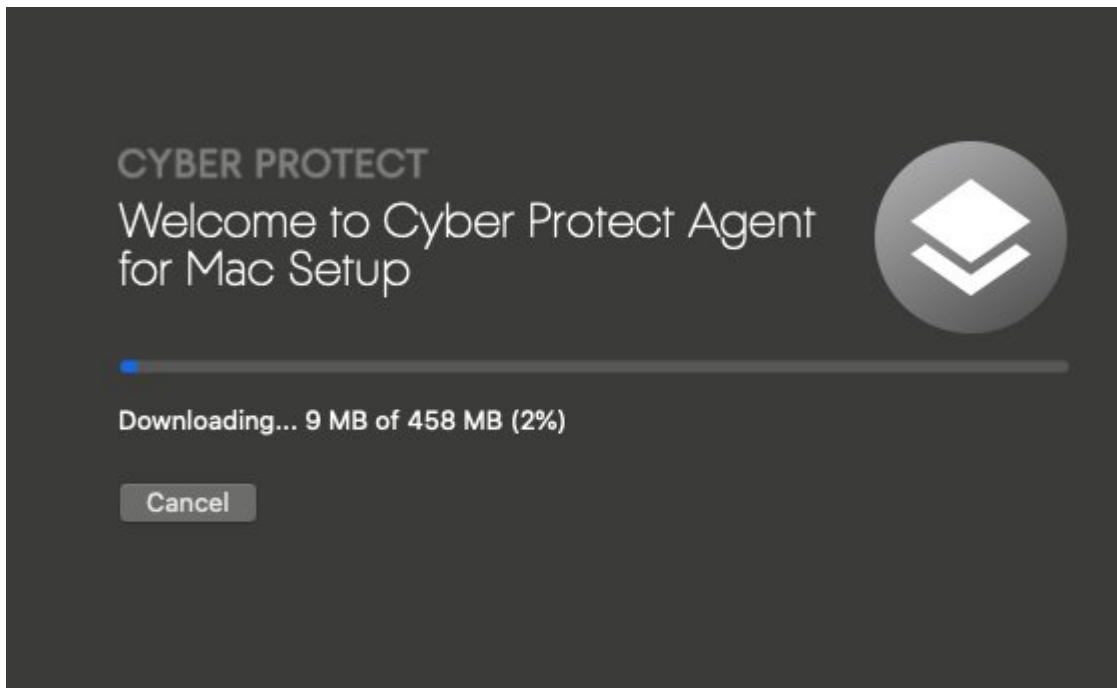
CYBER PROTECT

Welcome to Cyber Protect Agent
for Mac Setup

Install

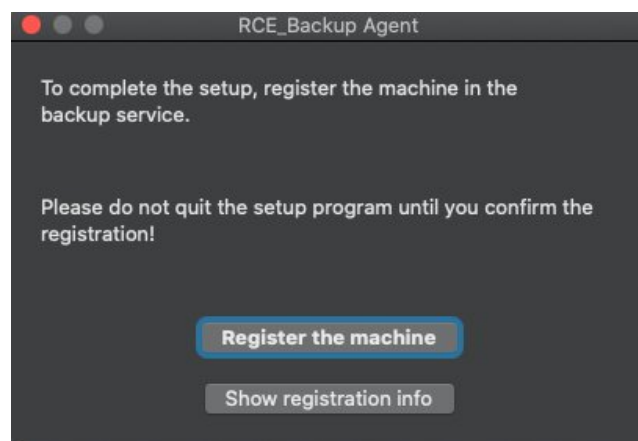


Wait for the installer to download the agent



Click register machine and it will open the web where you will need to login with your username and password we will be clicking show registration info.

You will then copy the code displayed and go to your cloud console



On your cloud console click add at the top of the page, and then click register under registration via code, paste the code copied in the step above and click check code.

REGISTRATION VIA CODE

Register a device by entering the code obtained during the agent installation.

REGISTER

Device registration



Please confirm the device registration

Registration code

BJXT-LWZB

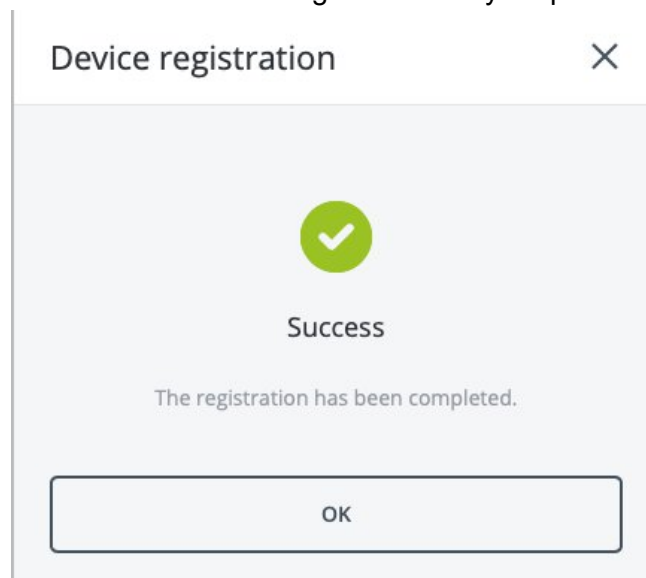
Register for:

jordan@quodes.co.za

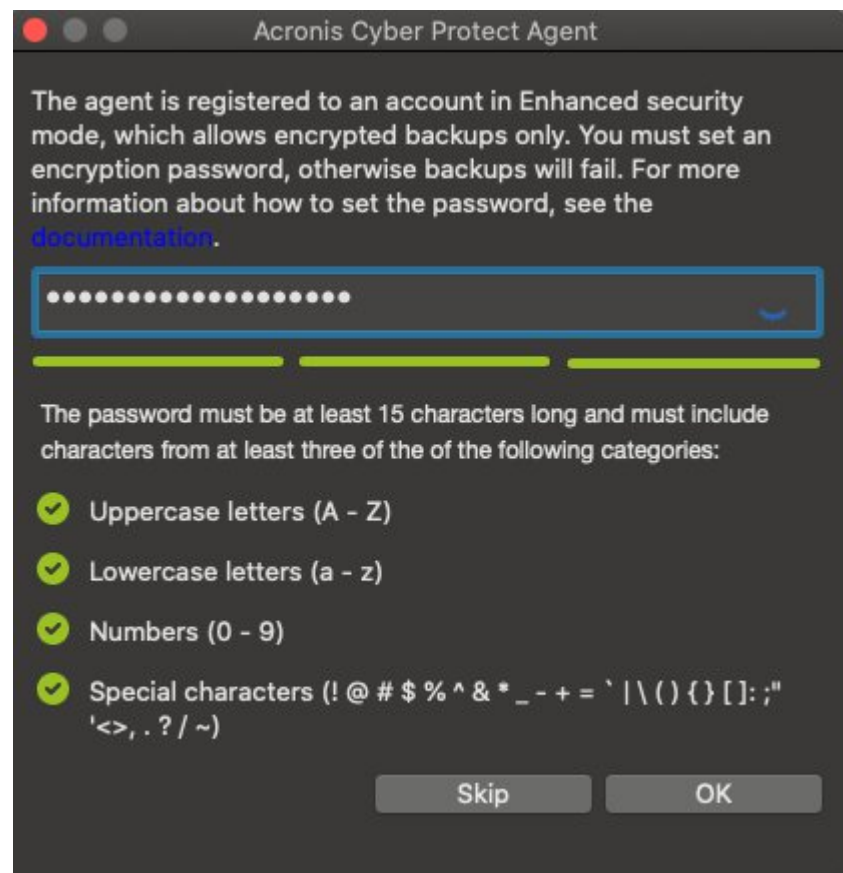
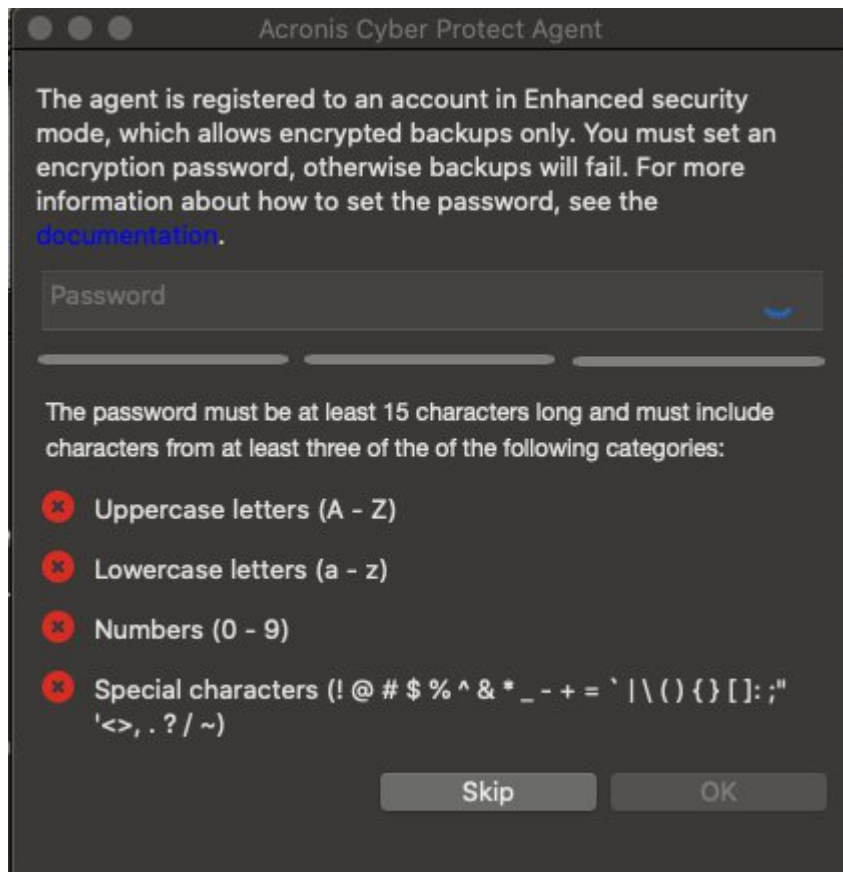
CHECK CODE

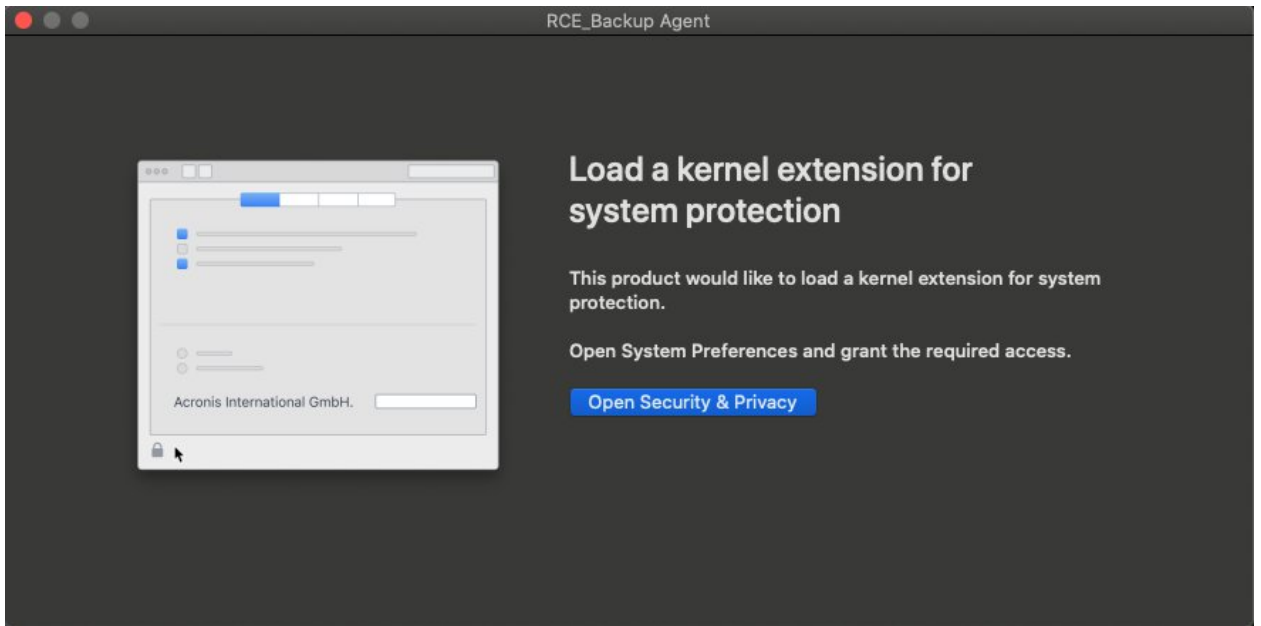
Click confirm registration once you are sure you have the correct machine.

Your device will be registered with your profile.

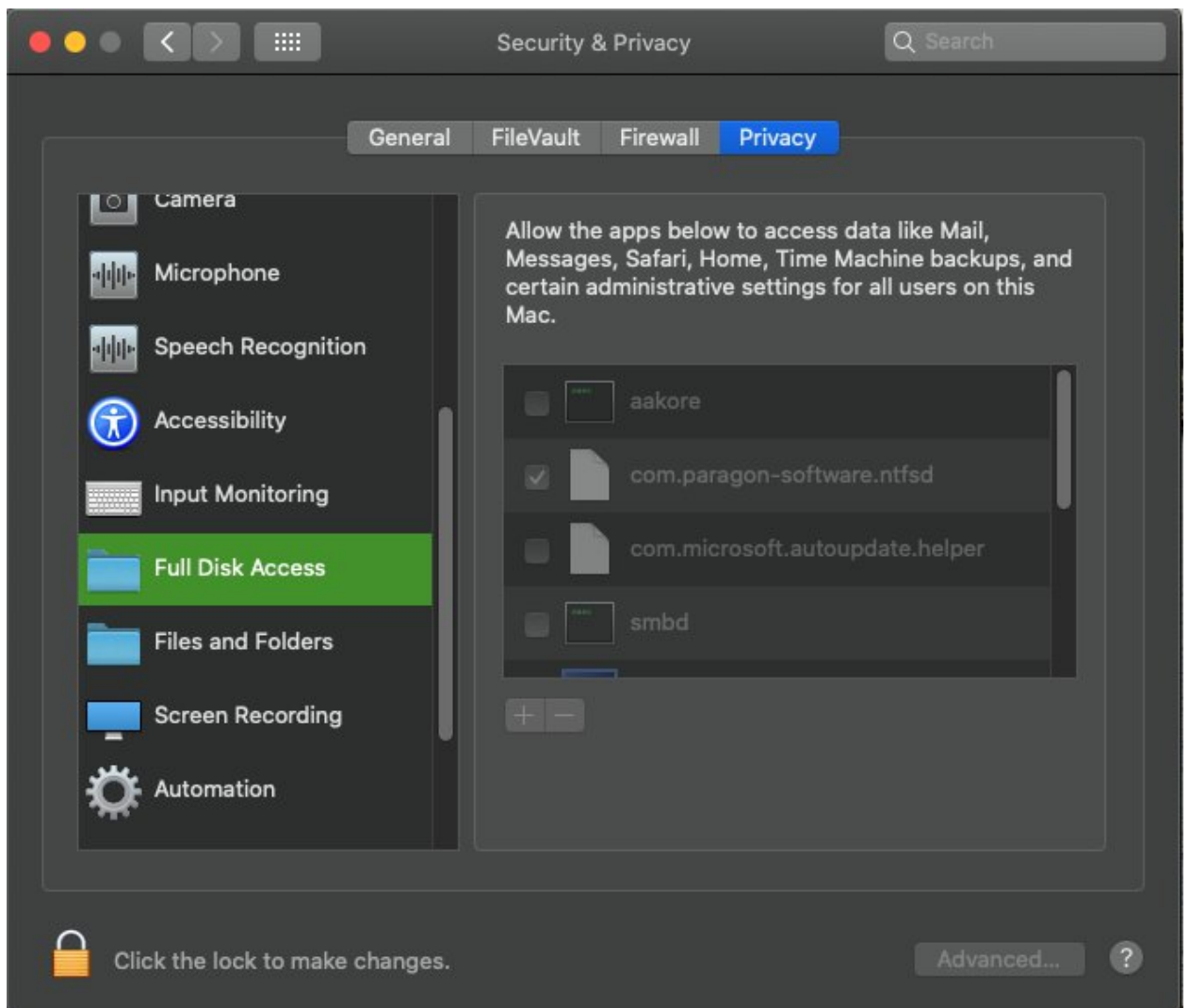


You will be prompted by the installer to create an encryption password, please make sure that you keep this password safe, if you lose this password you will not be able to restore any of your backups.





Open your Security and Privacy , and click on the privacy tab. Make sure you click on the lock and enter your mac password to unlock the settings.



Drag and drop the below icon into your full disk access in the step above so that the agent has access to backup your machine.


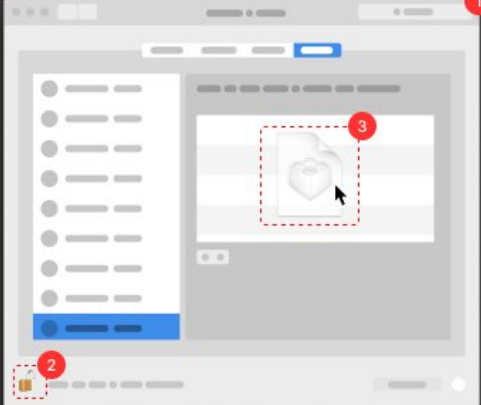
RCE_Backup Agent

Grant 'Full Disk Access' to RCE_Backup Agent

The backup agent needs the full disk access to back up your personal data. For example: Mail, Messages, Calendar.


How do I grant the full disk access?


- 1 [Open Security & Privacy](#)
- 2 Click the lock icon to allow changes.
- 3 Drag the application icon to the 'Full Disk Access' table.



Drag and drop this icon on step 3.

You are now ready to add a protection plan.

RCE_Backup 



Start protecting your device

[Apply default protection plan](#)

[Apply custom protection plan](#)

Adding a protection plan.



Status

 Not protected

Last backup

—

ENABLE PROTECTION

RECOVER

Click enable protection, and click on the second tab on the right to open the protection plan. If an error displays about encryption, click the clear button on the bottom right of the error, and then you will be able to create a backup plan.

New protection plan Apply

Backup ⌵
Entire machine to Cloud storage, Monday to Friday at 04:30 PM

What to back up	Entire machine ⌵
Where to back up	Cloud storage
Schedule	Monday to Friday at 04:30 PM i
How long to keep	Monthly: 6 months Weekly: 4 weeks Daily: 7 days
Encryption	<input checked="" type="checkbox"/> i
Backup options	Change

Active Protection >
Revert using cache, Self-protection on

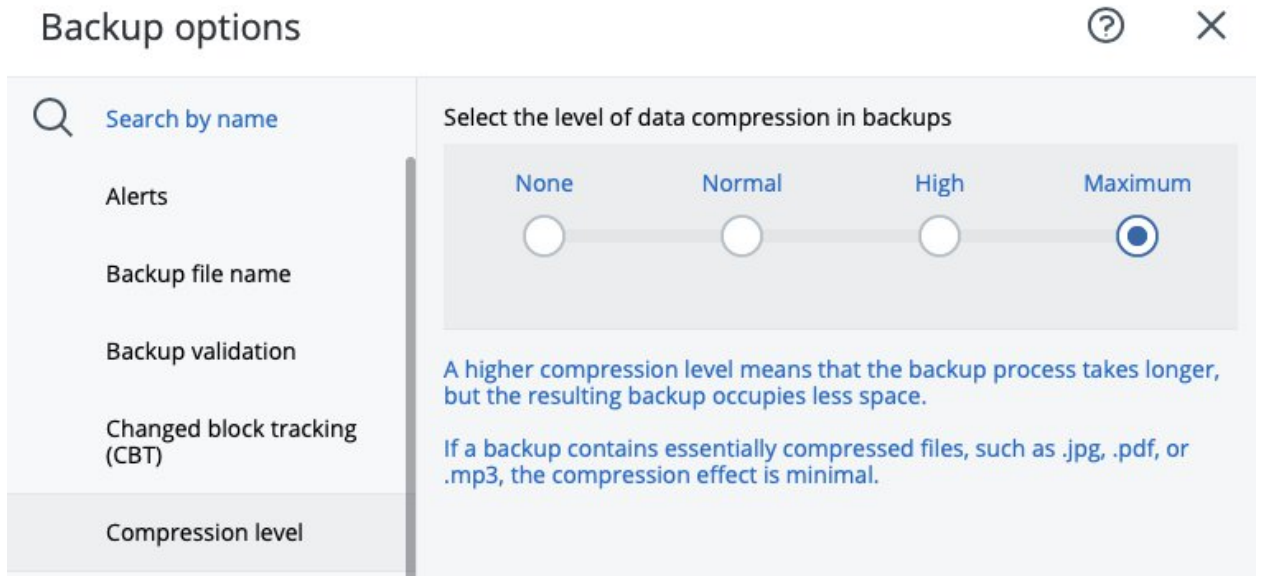
Vulnerability assessment >
Apple products, macOS third-party products, at 10:50 AM, Sunday to Saturday

Device control >
Access to all device types is allowed. Allowlists are configured

Here you can setup your protection plan, the schedule, how long you would like to keep it.

To utilize the most of your storage space click on backup options > compression level and select High or Maximum.

Compressed backups will take longer but the resulting backup occupies less space.



Once you are happy with your protection plan click apply, and your device will run on the schedule you created, you can manually run the first backup if you do not want to wait for the time that you have set.